

## ACKNOWLEDGMENT OF COUNTRY

---

Yaama, gulbiyaay ganu

buliyaagu gaba ngaya giirr ngaanngu Gamilaraay  
nhama, birralii yalagiirmawu ngaragay yalagiyu  
nhama wurruga nhalay dhawun garaga yilaadhu  
ngaya guliyaay ngindaay ngaanngu ngiyangu  
gadhabal dhawun gaagi gadhabal yaraadha  
gaba nginda

Hello, welcome all

I would like to acknowledge our Kamilaroi Elders, Children, the past present,  
the traditional owners of this land that we are on today,  
I welcome you to our wonderful land have a wonderful day  
Thank you.

*Jason Allan*

*Knowledge holder and learner*

# Acknowledgments

This project is supported by North West Local Land Services, through funding from the Australian Government's National Landcare Program.

Upper Mooki Landcare wishes to acknowledge and thank the Local Landcare Coordinator, Liverpool Plains Region, Penny Milson, for her contribution to the development of this plan. Upper Mooki Landcare also wishes to acknowledge Jason Allan, knowledge holder and learner.



**Australian Government**

**National  
Landcare  
Program**



## ABBREVIATIONS:

---

DPIE	Department of Planning Industry and Environment
LPSC	Liverpool Plains Shire Council
NWLLS	North West Local Land Services
RFS	Rural Fire Service
TRLA	Tamworth Regional Landcare Association
UMLC	Upper Mooki Landcare Inc
UNE	University of New England
WTPS	Willow Tree Public School

## DEFINITION:

---

**Regenerative agriculture** is any kind of farming that enables the restorative capacity of the earth. Regenerative agriculture preserves or improves the fertility of the soil, creates an abundance of food and other agricultural products, contributes to vibrant communities and equitable economies, and respects the ecology of the natural world. Fertile soil helps create nourishing food and, in turn, healthy people and robust communities.

— Farmers without Borders

# Background

In 2015, Upper Mooki Landcare Inc (UMLC) produced its inaugural 5 year Strategic Plan (2015 - 2020). This provided the foundation for a range of activities, which have been reported annually by the Chairperson in Chairman's Reports.

This Plan will build on the achievements of the previous strategic plan.

This Strategic Plan (2021- 2026) has been developed by a small working group consisting of two Upper Mooki Landcare Executive, two UMLC members and the Local Landcare Coordinator for the Liverpool Plains Region.

This plan has been endorsed by the Executive Committee.



Chairperson:  
Nicola Chirlian



Deputy Chair:  
Roger Ottery



Secretary/Public Officer:  
Sandra Clark



Treasurer:  
Myles Sevil

## LOCATION:

Upper Mooki Landcare Inc. (UMLC) covers an area in the south-eastern corner of the Liverpool Slopes and Plains New South Wales, and includes the south eastern area of the Warrah Creek Water Sources Area and its catchment to its confluence with the Mooki River.

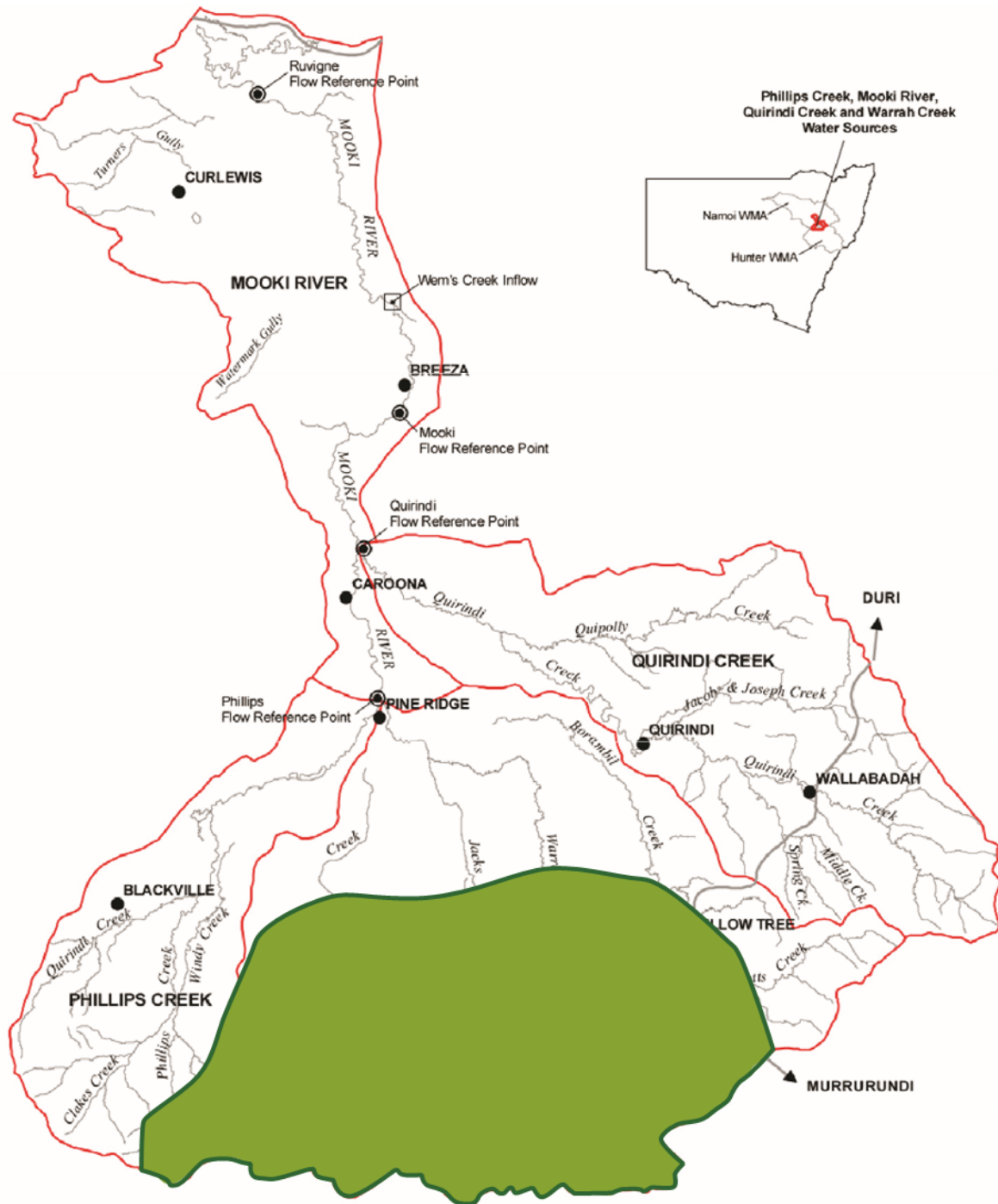
Members are predominantly farmers from this area. We also have members from neighbouring catchments who share our vision and who are engaged with the activities of the UMLC group.

Mooki River water sources include:

Warrah Creek  
Big Jacks Creek  
Little Jacks Creek  
MacDonalds Creek  
Dry Creek

Chilcotts Creek  
Millers Creek  
Colly Creek  
Pump Station Creek  
Windy Creek

Doughboy Hollow Creek  
Yarramanbah Creek  
Phillips Creek  
Clarkes Creek  
Black Creek



**Legend**

- Town
- ⊙ Flow Reference Point
- Inflow
- River and Creek
- Road and Highway
- ▭ Phillips Creek, Mooki River, Quirindi Creek, Warrah Creek, Water sources



**Map 25- Phillips Creek, Mooki River, Quirindi Creek, Warrah Creek Water Sources**



[http://www.water.nsw.gov.au/\\_\\_data/assets/pdf\\_file/0011/547238/act\\_namoi\\_phillips\\_mooki\\_quirindi\\_warrah\\_creeks\\_water\\_sources.pdf](http://www.water.nsw.gov.au/__data/assets/pdf_file/0011/547238/act_namoi_phillips_mooki_quirindi_warrah_creeks_water_sources.pdf)

# Our Charter

## OUR VISION

---

To meet the challenge of stewarding land in sustainable ways.

## OUR OBJECTIVES ARE TO:

---

- Continually improve our management of soil, water and vegetation.
- Keep informed about impacts of climate change on farm and state lands environment.
- Promote information about new technology and innovations to our communities.
- Actively keep informed about mining and gas exploration and extraction affecting the environment (water, biodiversity, land use and state lands).
- Take whatever steps deemed necessary to ensure and promote the protection and conservation of the environment (soil, water, biodiversity on farms and state lands).

## OUR VALUES:

---

**RESPECT:** for our First Nations people, for the environment, ourselves and others.

**INCLUSIVENESS:** of all communities from Willow Tree to Blackville (covered by the upper portions of the Warrah, Big Jack's, Little Jacks, Miller's, McDonalds, Pump Station, Yarramanbah, Phillips and Black Creeks) and those from neighbouring catchments who share our vision.

**INTERGENERATIONAL EQUITY:** with an aim to continually improve the condition of our natural resources for future generations.

**COMMUNITY:** as we work to foster a strong, informed, caring and active community.

**RESPONSIBILITY:** as custodians of land and our natural resources, to be part of the solution to the challenges which face us.



*UMLC Treasurer Myles Sevil, Janice Sevil and Chair Nicola Chirlan promoting Landcare at AgQuip Gunnedah 2017.*

---

## HISTORY:

---

The Liverpool Plains is one of the richest agricultural regions in the world. Lava flows millions of years ago not only produced the Liverpool Range, but the fertile black soils, the water storing gravel beds and the many streams that recharge the massive pristine ground water supplies. The climatic conditions of the Liverpool Plains have historically permitted both summer and winter cropping. The proximity to Eastern seaboard markets have assured the reputation of the Liverpool Plains as a great agricultural region.

---

*ngiyaningu dhiiyaan waan baraay bagay, garaarr dhawun, gunimaa*

our families work with rivers, grasslands, earth, mother earth

Our people lived along the Mooki and the plains in plentiful numbers because the land provided easy access to all types of foods.

A great abundance of food sources was readily available because of how the land was cleared over generations by many groups working in harmony with that purpose in mind.

All types of grasses would flourish throughout each season, which would in turn provide for the various species of animals.

Knowledge and stories were passed through generations providing information of how to gain access to specific grass and river areas for different types of seasonal foods.

Change came through seeing other Aboriginal men bringing an unknown group of people we had never seen before, they had skin like clouds, a new lingo and weapons, they brought death and destruction to everything around us, we were told we could no longer walk our lands.

Then came their animals, changing the landscape and all food sources, our families were moved closer and closer together, further and further down the Mooki, many many conflicts happening, death to everything we knew.

We were moved to one area so they could watch us and they knew where we are at all times, the end of life has we know it.

We were told where and how to live; we did not want this.

*Jason Allan* Knowledge holder and learner.

---

Over the years, a large part of the A. A. Co owned land was sub-divided for settlement so that today holdings vary in size from 100 hectares to 1000s of hectares. In the early decades, management of this land was based on European practices characterised often by extensive clearing and overgrazing. This led to a range of problems such as depleted soils, loss of native habitat, erosion, weeds and pests. Today, better knowledge and a growing appreciation of the benefits of biodiversity and regenerative agricultural practices is resulting in a turnaround of land management in multiple pockets across the Liverpool Plains.

Landcare had its origins in the late 1980s when the then Prime Minister, Mr Bob Hawke launched Landcare. In the 1990s, the 'decade of Landcare' emerged; funds were abundant and thousands of groups formed to undertake projects on private and public land. In the Liverpool Plains the following Landcare groups emerged: Big Jacks Creek Landcare, Warrah Creek Landcare and Borambil Creek Landcare group.

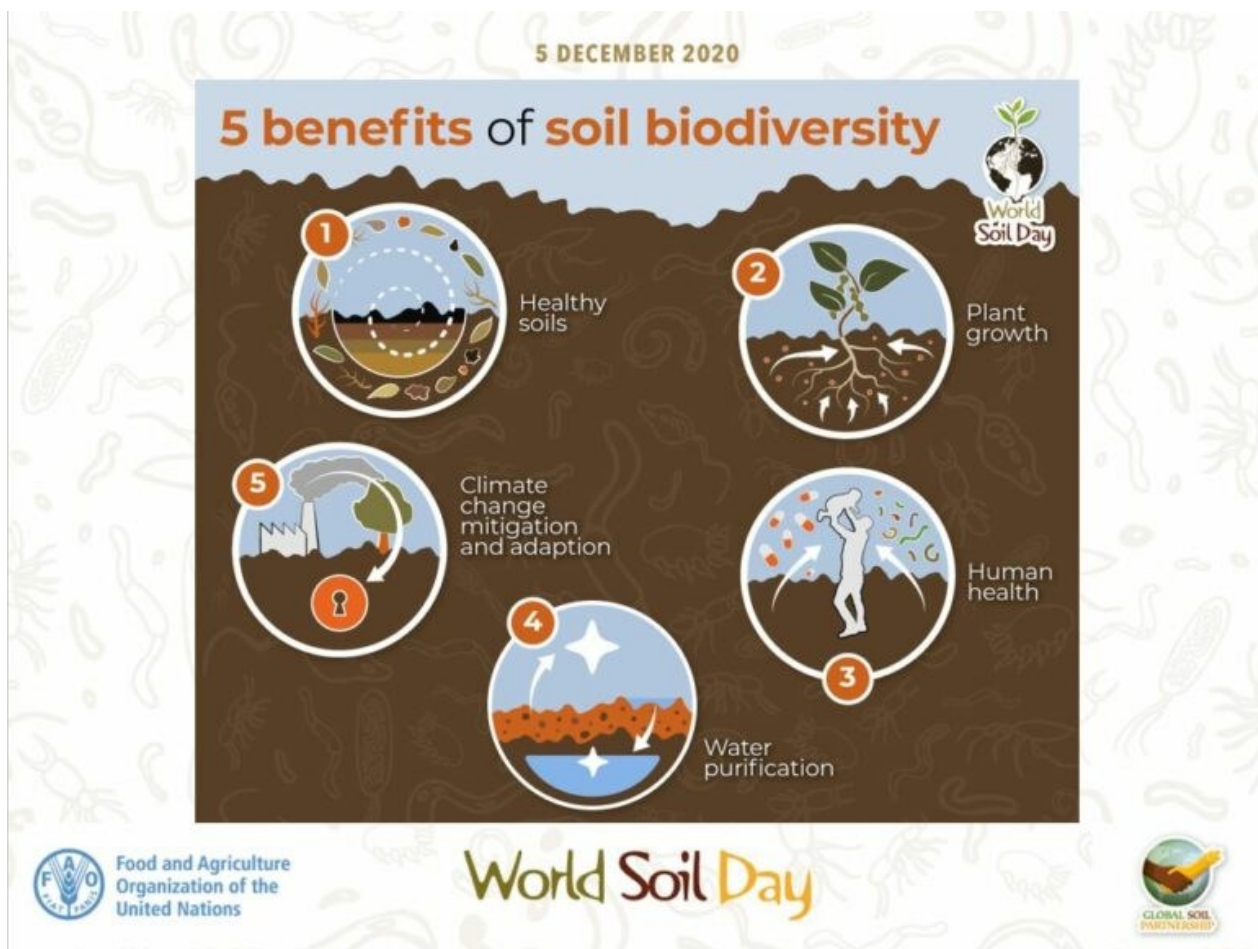
Upper Mooki Landcare Inc (UMLC) in its current form resulted from the amalgamation of these local Landcare groups in 2009. UMLC became an incorporated group in 2013.



## UPPER MOOKI LANDCARE PROJECTS:

Previously funded projects have addressed issues including:

- ◆ Soil erosion;
- ◆ Weeds;
- ◆ Roadside vegetation management;
- ◆ Property planning;
- ◆ Fencing of riparian zones;
- ◆ Development of creek plans;
- ◆ Carbon farming;
- Sub-catchment flood management plan for Warrah Creek
- ◆ Habitat protection and enhancement;
- ◆ Increasing biodiversity; and
- ◆ Protecting local water resources.



## ACTIVITIES FROM OUR LAST PLAN (2015-2020) HAVE INCLUDED:

### Raising community awareness



Film & networking afternoon: Royal Theatre, Quirindi 2020



100 Mile Dinner



## Educational Projects – including workshops, field



*Dr. Christine Jones, UNE and Gabe Brown, Soil organic matter Master from North Dakota.*



*Three generations packing Warrah Creek*



*Dr. Rob Banks, UQ – Soil Carbon Workshop*



## Field days, training opportunities and social events



Warrarah Creek Hall to learn from international speakers.



**The Why:** Walter Jehne (Healthy Soils Australia)

A retired scientist who is now a part of a not-for-profit group, Healthy Soils Australia, which fosters solutions for the regeneration of Australia's landscape through the unique bio-processes which are fundamental in securing water, food and regional social needs, as climate shifts, as land degeneration takes place, and as limits in oil based inputs and population demands intensify.

**The How:** Colin Seis

From 1993 Colin developed a technique of planting crops into grassland called Pasture Cropping, which regenerates soil and grassland while producing grain. In 2005 he won the NSW Conservation Farmer of the year award and in 2007 won the inaugural "Carbon farmer of the year award" in NSW. He was the recipient of the 2014 Bob Hawke award for Landcare.

**Financial Possibilities:** Ignatius Verbeek (Director, Carbon Link)

An engineer with a diverse background in engineering, environmental management and greenhouse and materials accounting. Over the past several years Ignatius's focus has been on making soil carbon trading a reality. Ignatius is currently developing commercially available cost effective systems to measure soil carbon.

**Morning tea, lunch and afternoon tea provided.**

**Day will be concluded with drinks at 5pm with an option to attend the Prawn & Chicken preschool fundraising night at Willow Tree Bowling Club for only \$20pp (please rsvp by 26/2/16 to attend dinner)**

**RSVP by 7th March to 02 6747 5600 or 6747 1760 or email [nicky@tallawang.com](mailto:nicky@tallawang.com)**



Local Land Services North West





# Educational Activities



*Riparian Rehabilitation Workshop*



*Colin Seis, regenerating soil*



*David Ward (Agronomist) multispecies pasture cropping*



Fundraising for community emergency  
water supply, Warrah Creek

# Rusty Gold Charity Auction

11am Saturday, 11th of August  
Warrah Creek Hall, Willow Tree

Warrah Creek Community needs an  
emergency water supply for the dry  
times, like now.

**Auction:**  
**100 Tonne of Road base gravel**

T & C Applies

BBQ - Qurindi Lions Club

RAFFLES

Live Entertainment

**Items for sale:**

Kitchen items, clothes, bric-a-brac,  
saddlery, doors, pipe, aviary, livestock  
scales, gates, super spreader, auger,  
troughs, concrete mixer, quadrunners  
Mouldboard plough, Chaff cutter,  
Landrover ute and so much more.





---

## ONGOING PROJECTS INCLUDE:

---



*Rehydration Project Participant Maddy Pursehouse, with NVIRO documentary makers Susannah Cowley and Nigel Christensen.*



*David Lee, Manager Windy Station, Susannah Cowley NVIRO Films, Angela Baker, LLS*

### **The Upper Mooki Rehydration Project (2020)**

(funded jointly by Catchment Action NSW and the Australian Government's National Landcare Program). This large project, supported by North West Local Land Services involves 13 properties across the Upper Mooki catchment.

Landowners are being supported to use a range of strategies (earthworks, riparian repair, enhanced grazing management practices, tree planting and multispecies vegetation) to increase groundcover and build drought resistance. The project also includes capacity building events for project participants and the wider community.

A short documentary, by NVIRO Media, is being made about the project.





*Jason & Sandra Clark planning water retention earthworks at “Yongala” with John MacIntyre and Craig Carter*



*LLS Staff Tim Watts and Angela Baker discuss completed earthworks for Rehydration Project with UMLC’s Nicola Chirlian, Craig Carter and Myles Sevil at “Hillvue” McDonalds Creek.*





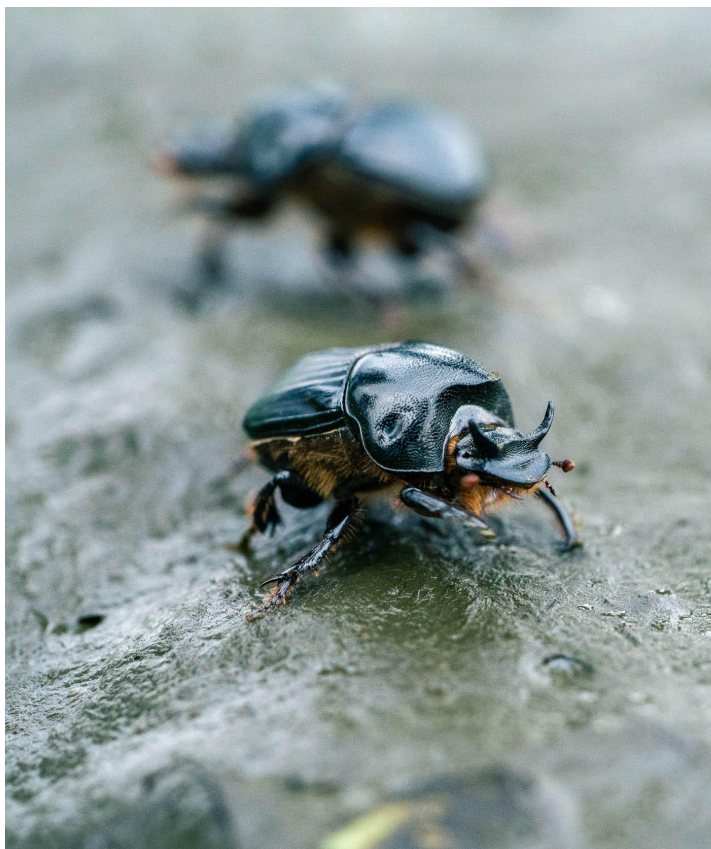
*Discussing biodiversity benefits of landscape rehydration, Angela Baker (LLS), Nicky Chirlian and Craig Carter, Yarramanbah Creek, "Tallawang".*



*Angela Baker & Tim Watts (LLS), Nicola Chirlian discussing ground cover as part of UMLC Rehydration Project*



## Dung Beetle Monitoring - in partnership with UNE



*Image captured by DBEE  
Credit: Matt Beaver*



*Dr Zac Hemmings, UNE, inspecting dung beetles near a water point at "Tallawang".*



**DUNG  
BEETLE**

Ecosystem Engineers





## READ

Back from the Brink, How Australia's landscape can be saved, **Peter Andrews**  
Call of the Reed Warbler, A New Agriculture, A New Earth, **Charles Massy**  
Dirt to Soil: One Family's Journey into Regenerative Agriculture, **Gabe Brown**  
For the Love of Soil, Strategies to regenerate our food production systems, **Nicole Masters**  
Holistic Management Handbook: Regenerating your Land and Growing your Profits. **Jody Butterfield, Sam Bingham, Allan Savory**. Third Edition.  
How to Not Go Broke Ranching: Things I Learned the Hard Way in Fifty Years of Ranching, **Walt Davis**  
Salad Bar Beef, **Joel Salatin**

## LISTEN

**For the Love of Soil**, Nicole Masters: Now available as an audio book (9hrs, 15 mins)  
**Ground Cover**: Australian podcast series created for farmers by farmers exploring real life stories of land managers who have transitioned from conventional farming to regenerative agriculture.

## WATCH

**Cover Crops for Grazing**, Gabe Brown - <https://www.youtube.com/watch?v=tuwwfL2o9d4>  
**Keys to Building a Healthy Soil**, Gabe Brown - <https://www.youtube.com/watch?v=9yPjoh9YJMK>  
**Soil Carbon Cowboys**: 12-minute videos available online at <https://carboncowboys.org/films>



## CONNECT

### **Across the Paddock e-news**

Bimonthly e-Newsletter from the desk of the Regional Agriculture Landcare Facilitator (North West).  
Contact: [iana@trla.org.au](mailto:iana@trla.org.au)

### **North West Regional Agriculture Landcare Facilitator**

Facebook page with news, events, training and funding opportunities relating to natural resource management and regenerative agriculture.

### **Regenerative Agriculture Group**

Facebook group of people sharing ideas, knowledge and experience in regenerative agriculture.

### **Upper Mooki Landcare Inc**

Facebook page intended to keep in touch with existing members, invite new members and provide updates about events and local opportunities to get involved in regen ag.

## VISIT

### **Regenerative Australian Farmers: Promoting Healthy Soils**

<https://regenfarmers.com.au/>  
Service provider to landholders for soil carbon projects

### **Soils for Life**

<http://www.soilsforlife.org.au/home/index.html>  
Not for profit dedicated to encouraging regenerative agriculture. Great case studies.

## LEARN

### **Accountable Agriculture Australia**

Newly established Liverpool Plains based business focussed on offering training in Holistic Management.  
[craig@tallawang.com](mailto:craig@tallawang.com)

### **Inside Out Management**

Training and consultation in Holistic Management.  
<https://www.insideoutsidemgt.com.au/>

### **Integrity Soils NZ**

Offering consultancy and workshops in a wide variety of regenerative farming practices.  
<https://www.integritysoils.co.nz/>

### **Land to Market Australia**

Part of a global network committed to farming practices that regenerate the land. Offering training, mentoring and verified branding of produce.  
<http://landtomarket.com.au/index.php>

### **Low Stress Stock Handling (LSS)**

LSS trainers can travel throughout NSW to provide training schools (usually a 2-day course).  
<https://www.lss.net.au/>

### **RegenAG**

Provides education, training and consultancy opportunities in regenerative agriculture  
<http://regenag.com/web/>

### **Resource Consulting Services**

Grazing for Profit and a range of other short courses & workshops. Also offers Next Steps and Executive Link.  
<http://www.rcsaustralia.com.au/>

### **Southern Blue Regenerative**

Northern Tablelands based business focused on regenerative agriculture, sustainable farm tourism, workshops and training programs.  
<https://www.southernblue.com.au/>

### **Tarwyn Park Training**

Family run training course teaching the principles of Natural Sequence Farming and how to implement them into any operation. Check website for upcoming course locations, dates etc.  
<https://www.tarwynparktraining.com.au/>

The above list is not comprehensive. It is intended to provide a starting point for primary producers in the North West who are interested in learning about regenerative agriculture. It will be updated periodically. Compiled by Tamworth Regional Landcare Association, February 2020.



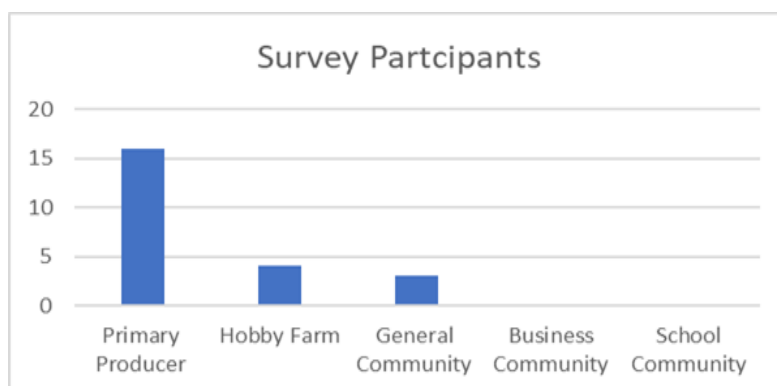
## STRATEGIC PLANNING PROCESS

UMLC formed a small working group in early November 2020 to map a process for developing this 5 year Plan and specifically to review the results of our recent community survey; the highlights of which are presented below.



*Strategic Plan subcommittee: Catherine Watt, Kathy Keane, Nicola Chirlan, Sandra Clarke, Penny Milson.*

Landcare members, local landholders, general community and local school communities were invited to participate in a brief, online community survey designed to help UMLC determine key priorities for action under this Plan. The online survey was promoted via email, Facebook and verbally at two UMLC meetings (August and September 2020). It was kept open for a period of 11 weeks; 1 July – 18 September 2020. A total of 23 responses were received.



---

## Key Issues in Land Management

An open-ended question which asked participants to nominate 'important issues in land management' revealed the following as the top three issues:

- Maintaining Groundcover
- Soil Health
- Drought Resilience / Adapting to Climate Change

## Priority Areas

Survey participants were presented with a long list of potential topics of interest. Table 1 presents their responses; ranked highest to lowest. Issues have been categorised as belonging to one of the following broad areas: water, management, regenerative agriculture, soils, plants, fauna, habitat and Aboriginal Culture.

As can be seen from Table 1 participants were interested in a broad variety of topics though the most popular (nominated by at least 70% of participants) were as follows:

- Rehydration
- Pasture/Grazing Management
- Regenerative Agriculture
- Healthy Soils/Soil Carbon
- Soil Erosion



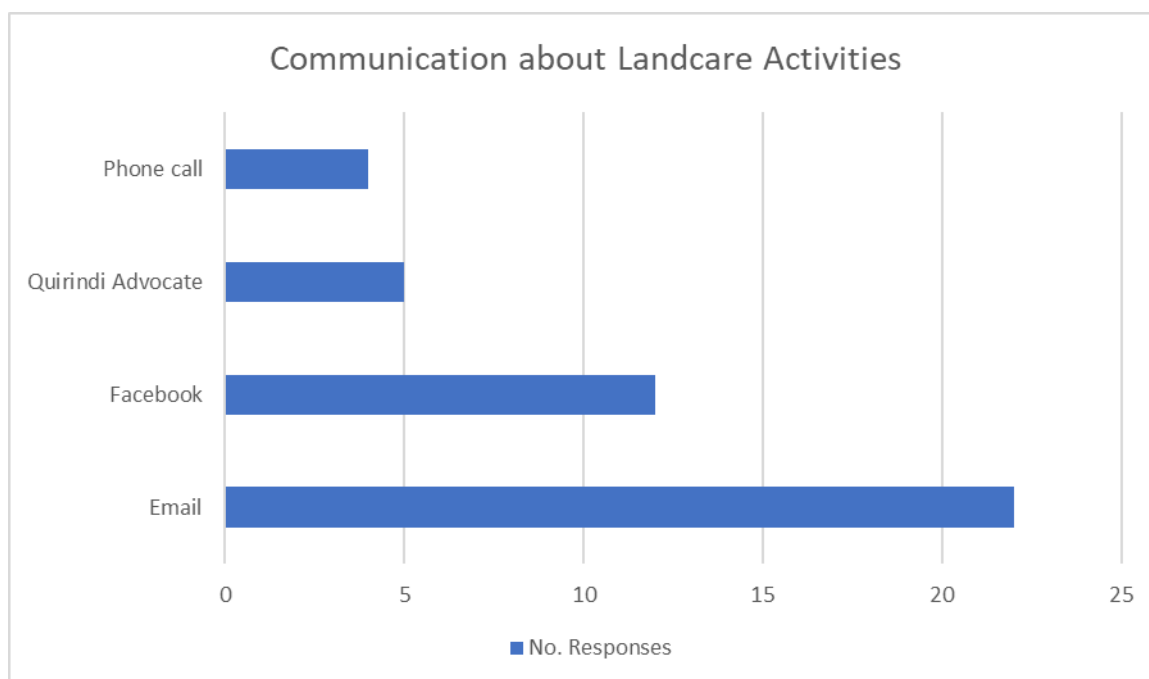
**Table 1: Priority Areas for Strategic Plan**

<b>Answer Choices</b>	<b>Responses</b>	<b>No of Responses</b>	<b>Topic</b>
Rehydration	78%	18	Water
Pasture/Grazing Management	74%	17	Management
Regenerative Agriculture	74%	17	Regenerative Ag
Healthy soils/soil Carbon	70%	16	Soils
Soil Erosion	70%	16	Water
Weed management/Weed identification	61%	14	Plants
Riparian zones	61%	14	Water
Adapting to Climate Change/Climate Variability	57%	13	Climate
Drought Management	57%	13	Climate
Habitat Enhancement for Koala	52%	12	Habitat
Dung Beetles	52%	12	Soils
Groundwater Issues	52%	12	Water
Bees	48%	11	Fauna
Birds on Farms	43%	10	Fauna
Revegetation	43%	10	Habitat
Aboriginal Culture	39%	9	Aboriginal Culture
Native Tree Enhancement	39%	9	Habitat
Coal & CSG	35%	8	Carbon
Organic/biological Farming	30%	7	Management
Indigenous Fire Management	26%	6	Aboriginal Culture
Ferals & Pests	26%	6	Fauna
Farm Planning	26%	6	Management
Your Backyard as Wildlife Habitat	22%	5	Habitat
Farm Safety	22%	5	Management
Grant Writing/Finding Funding	22%	5	Other
Health & Mental Health	22%	5	People
Bush Tucker	17%	4	Aboriginal Culture
Composting	17%	4	Management
Leadership/Motivation	17%	4	People
Landcare in Schools	13%	3	Education
Native Tree Loss	0%	0	Habitat

---

## Preferred Methods of Communication

Participants showed a strong preference for email communication however it should be taken into consideration that this data was gathered using an online survey (only) so we should expect some bias.



In addition, three participants nominated the radio, two voted for word of mouth and only one participant indicated a preference for letter box drop.

## Attractive Features of Landcare Activities

The most attractive features of a Landcare event or activity were:

- Expert Speakers and Education (19 out of 23 participants)
- Time to socialise/catch up with neighbours (11 participants)
- Hands on/practical activities (10 participants)

Other factors which were attractive (in descending order) included outdoor events, daytime events, good food, online participation and family friendly events. Participants were split evenly in terms of their preference for local events versus events hosted outside of the local area.

---

## THE STEWARDSHIP STATEMENT

---

UMLC recognises the complexity of the environment in which we as land managers operate.

*We are alarmed by increasing global warming and its affect on our environment. We aim to play our part to help the world reach “Drawdown”— the point in the future when levels of greenhouse gases in the atmosphere stop climbing and start to steadily decline, thereby stopping catastrophic climate change — as quickly, safely, and equitably as possible.*

*Human activity has transformed a significant fraction of the planet’s land, especially for growing food and harvesting forests. Land is the common ground of shelter, sustenance, feed for animals, fiber, timber, and some sources of energy, as well as the direct source of livelihood for billions of people.*

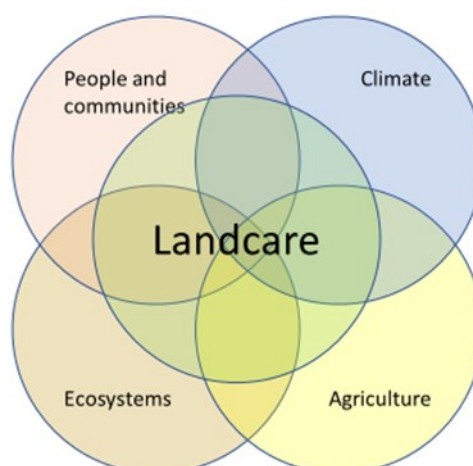
*How can we reduce the pressures on ecosystems and land, while meeting the growing demands for food and fiber worldwide? How can we do what we do on land better, tending it in ways that decrease emissions from agriculture and forestry?*

*The answers to these questions are critical for stemming greenhouse gases, sustaining the planet’s living systems, addressing food security, and protecting human health, all inextricably linked.(1)*

Hawken, P (2017), Drawdown: the Most Comprehensive Plan Ever Proposed to Reverse Global Warming

In this Plan, we will endeavour to address as many of the issues and challenges which directly influence our capacity to steward our land for maximum benefit while preserving our natural resources and respecting the ecology of the natural environment.

The diagram below represents the interrelated nature of the system in which our Landcare program in the Upper Mooki catchment (and beyond) operates.



Landcare is a community-based movement that manages and protects our natural resources – creating more productive and sustainable farms, conserving our environment, and building more cohesive and resilient communities.

# Action Plan 2021-2026

Under this Strategic Plan, Upper Mooki Landcare Inc will endeavour to:

1. Facilitate information flow from partners within our region like Landcare, Local Land Services, educational institutions and neighbouring Landcare groups regarding educational opportunities;
2. Work in direct partnership with our partners to provide educational opportunities that will increase our capacity to be sustainable land managers;
3. Provide educational opportunities in areas of land management that have been specifically identified by our catchment as relevant and of a high priority;
4. Increase our engagement with local landholders and general community by promoting who we are and what we do;
5. Pursue intergenerational equity through increased communication and initiatives which involve local school communities;
6. Showcase local examples of Landcare success stories and solutions in action e.g. where degraded and eroded transforms to productive and biodiverse;
7. Provide opportunities for peer support that will assist landholders to put sustainable land management practices into place on their land;
8. Consult with all UMLC members on at least an annual basis\* to brainstorm suggestions for activities that we can deliver to help us meet the priority areas identified in this Plan;
9. Utilise Landcare meetings to share knowledge gained from access to recommended resources in regenerative agriculture e.g. books, podcasts, websites, courses, Youtube clips etc;
10. Maintain a flexible approach to delivering a local Landcare program ensuring we keep open the opportunity to respond to both emerging issues and opportunities;
11. Promote funding and grant opportunities to members as they arise;
12. Maintain good governance.

\*UMLC AGM will include an Agenda item in relation to planning activities for the forthcoming 12 months.



## Focus Areas for 2021-2026 Strategic plan

<b>Focus Area 1: WATER</b>
<ul style="list-style-type: none"><li>• Rehydration</li><li>• Ground water issues</li><li>• Water Infiltration Monitoring</li><li>• Riparian Enhancement</li><li>• Improving our waterways</li></ul>
<b>Focus Area 2: FUNCTIONAL ECOSYSTEMS</b>
<ul style="list-style-type: none"><li>• Biodiversity of plants, animals and soil biota/ restoring a healthy ecosystem</li><li>• Pasture / Grazing Management</li><li>• Weed identification &amp; management</li><li>• Pest/ feral species animal control</li><li>• Farm planning??</li></ul>
<b>Focus Area 3: ADAPTING TO CLIMATE CHANGE</b>
<ul style="list-style-type: none"><li>• Promote climate change mitigation measures</li><li>• Groundcover</li><li>• Rehydration</li><li>• Revegetation</li><li>• Drought resilience/ management</li></ul>
<b>Focus Area 4: SOIL HEALTH</b>
<ul style="list-style-type: none"><li>• Soil erosion</li><li>• Soil carbon &amp; healthy soil ecology</li></ul>
<b>Focus Area 5: HABITAT</b>
<ul style="list-style-type: none"><li>• Habitat enhancement for koalas</li><li>• Birds on Farms</li><li>• Dung beetles</li><li>• Bees</li><li>• Revegetation: Native Trees &amp; Shrubs</li><li>• Your backyard - bees, birds, composting, chickens, vegetables etc.</li></ul>
<b>Focus Area 6: ABORIGINAL CULTURE</b>
<ul style="list-style-type: none"><li>• Indigenous land management including cultural burning</li><li>• Cultural awareness</li><li>• Bush tucker</li></ul>
<b>Focus Area 7: PEOPLE</b>
<ul style="list-style-type: none"><li>• Peer support, mentoring newcomers &amp; social events</li><li>• Leadership &amp; motivation</li><li>• Continued learning &amp; education</li><li>• Income diversification</li><li>• School communities</li><li>• Health &amp; Wellbeing including mental health</li></ul>

## COLLABORATIONS:

---

The following collaborations currently exist and it is anticipated will continue. Partnerships are based on mutual information sharing, intermittent funding grants for workshops and projects, and support provided by Landcare Facilitators and Co-ordinators. It is anticipated that some projects will be run in conjunction with some of these groups.

North West Local Land Services.

Tamworth Regional Landcare Association

Regional Agricultural Landcare Facilitator

Upper Hunter Landcare

Willow Tree & Blackville Public School.

University of New England

Department of Primary Industry.

Sustainable North West.

Starfish Enterprises

NSW RFS

Wallabadah Creek Catchment Community

Walhallow Local Aboriginal Land Council



*Jason Allan, Knowledge holder and learner*

---

20 December 2020

Chairperson — Nicola Chirlian

**This document was completed in December 2020, and endorsed by UMLC Executive committee.**